



**William H. Myers Heritage Regatta**  
**Log Canoes**  
**August 24-25, 2024**  
**Tred Avon Yacht Club**  
**Oxford, MD**

**SAILING INSTRUCTIONS**

**1. RULES**

- 1.1. The regatta will be governed by the rules as defined in *The Racing Rules of Sailing* (RRS) and the rules of the Chesapeake Bay Log Sailing Canoe Association (CBLSCA).
- 1.2. In the event of a conflict between the *Notice of Race* and the *Sailing Instructions*, the *Sailing Instructions* take precedence. This changes RRS 63.7.
- 1.3. As used in the definition of “Zone” in the RRS, the word “hull” is replaced by “hull and equipment in normal position,” and includes boomkin, boards, bowsprit and jib club in sailing position as length of hull.

**2. CHANGES TO SAILING INSTRUCTIONS**

- 2.1. Any change to the Sailing Instructions will be posted on the official bulletin board located in the first floor lobby of the TAYC clubhouse and at [www.tayc.com/racing-calendar](http://www.tayc.com/racing-calendar) no later than 2000 the day prior to the race.
- 2.2. Changes to the Sailing Instructions may be made at the competitors meeting. It is the responsibility of each competitor to have representation at the competitors meeting.

**3. COMMUNICATIONS WITH COMPETITORS**

- 3.1. Notices to competitors will be posted on the official bulletin board and at [www.tayc.com/racing-calendar](http://www.tayc.com/racing-calendar) no later than 0900 each race day.
- 3.2. On the water, the Race Committee (RC) intends to monitor and, if necessary, communicate with competitors via VHF channel 18A.
- 3.3. A competitors meeting will be held on the main floating dock at TAYC at 0830 on both Saturday and Sunday.

**4. SIGNALS MADE ASHORE**

- 4.1. Signals made ashore will be displayed from the signal mast on TAYC’s upper deck.
- 4.2. When flag “AP” is displayed ashore, “1 minute” is replaced with “not less than 60 minutes” in Race Signal AP.

**5. SCHEDULE OF RACES**

- 5.1. There are three races scheduled, two on Saturday and one on Sunday.
- 5.2. The warning signal for the first race both days will be 1000.
- 5.3. The warning signal for the second race on Saturday will be 1400.

**6. RACING AREA**

- 6.1. The racing area will be in the Tred Avon River between Choptank River Light and the mouth of Plaindealing Creek..

## 7. THE COURSES

- 7.1. Letters designating the course (see page 5) will be displayed on the starboard side of the Race Committee Signal boat prior to the warning signal.
- 7.2. If a windward-leeward or triangle course is selected, a letter will be displayed corresponding to the attached course diagrams. The course letter will be followed by a numeral indicating the number of windward legs to be sailed, which number may be different than the diagram example. Red letters indicate marks to be left to port, green or black letters indicate marks to be left to starboard.
- 7.3. If the selected course is comprised of random marks, the course will be designated by letters displayed in the sequence the marks are to be passed. Red letters indicate marks are to be left to port, green or black letters indicate marks are to be left to starboard. A numeral following the sequence indicates the number of times the course is to be sailed.
- 7.4. Courses may be shortened by the race committee at any mark, without notice at the previous mark.
- 7.5. **A boat may not pass through the start/finish line of any other fleet. A boat infringing this rule cannot exonerate herself and will be disqualified.**

## 8. MARKS

- 8.1. The start and finish marks will be inflatable orange Club cylindrical marks.
- 8.2. Other marks are either inflatable orange Club cylinders or government marks in accordance with the attached Log Canoe Race Sheet:
  - A. Club start/finish mark
  - B. Government mark "G1" near Benoni Pt.
  - C. Club mark near Bachelor's Pt.
  - F. Club mark near entrance to Foxhole Creek (ignore small orange ball)
  - N. Government Mark "R2" off TAYC
  - L. Choptank River light
  - P. Government Mark "R4" off Peck's Point
  - S. Club mark near Pier St. (ignore small orange ball)
  - X. Club mark near entrance to Tar and Plaindealing Creeks (ignore small orange ball)

## 9. THE START

- 9.1. Signals shall be made at five-minute intervals (10 minute sequence). Times shall be taken from the visual signals; the failure of a sound signal shall be disregarded. Races will be started as follows:

Warning signal (10 minutes before start) – yellow shape and sound  
Preparatory signal (5 minutes before start) – blue shape and sound  
Starting signal – red shape and sound  
This changes RRS 26.
- 9.2. The starting line will be between an orange flag on the RC signal boat and the course side of an orange cylinder to port.
- 9.3. A race committee starting or finishing boat may set a stand-off buoy, which buoy, the line attaching it to the race committee boat and the race committee boat are all part of the starting or finishing mark.
- 9.4. A boat crossing the starting line later than 10 minutes after her starting signal will be scored "DNS" without a hearing. This changes RRS A4 and A5.

- 9.5. The Race Committee will attempt to hail OCS boats on VHF channel 18A, but the failure to hail, the hail of some but not all OCS boats, the order in which hailed or untimely hailing of boats shall not be grounds for redress. This changes RRS 62.1(a).

## **10. CHANGE OF THE NEXT LEG OF THE COURSE**

- 10.1. A change of the next leg of the course will be accomplished in accordance with RRS 33.
- 10.2. In the event of a course change, a mark boat will attempt to be in the proximity of the next mark to be rounded. Failure of the mark boat to be on station or to display a flag will not be grounds for redress.

## **11. THE FINISH**

- 11.1. The finishing line will be between a blue flag on the Race Committee finishing boat and the course side of the nearby mark.

## **12. PENALTY SYSTEM**

- 12.1 RRS 44 is changed to “one turn” wherever the phrase “two turns” occurs.

## **13. TIME LIMITS**

- 13.1. The time limit for the first boat to finish will be 2 ½ hours if two races are scheduled for the day, 3 hours if one race is scheduled.
- 13.2. Boats must finish within 45 minutes of the first boat or be scored “DNF” without a hearing. This changes RRS 35, A4 and A5.

## **14. PROTEST AND REQUESTS FOR REDRESS**

- 14.1. The protesting yacht must satisfy the requirements of RRS 61.1a.
- 14.2. A written protest or request for redress must be filed with the PRO or member of the Protest Committee within one hour after the Race Committee signal boat returns to the dock. Docking time will be posted on the official bulletin board. Protest forms are available in the clubhouse.
- 14.3. The time and location of protest hearings will be posted on the official bulletin board.

## **15. SCORING**

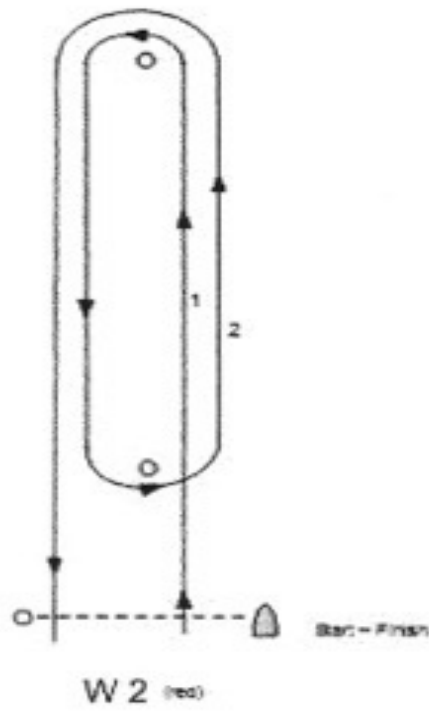
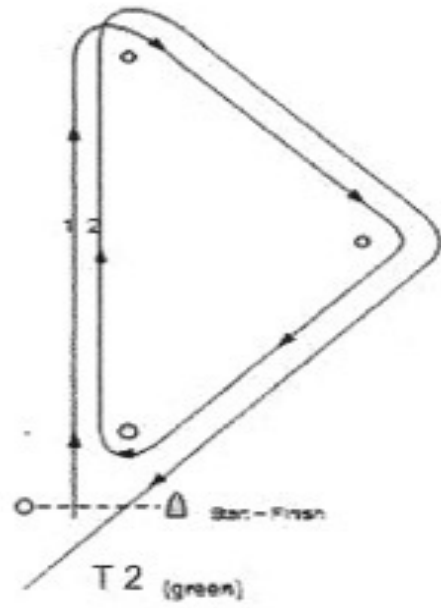
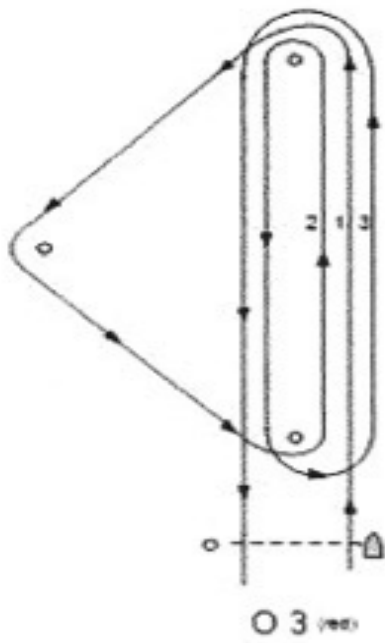
- 15.1. RRS Appendix A4, Low Point System, will apply.
- 15.2. One race must be completed to constitute the series.
- 15.3. No race score may be discarded.

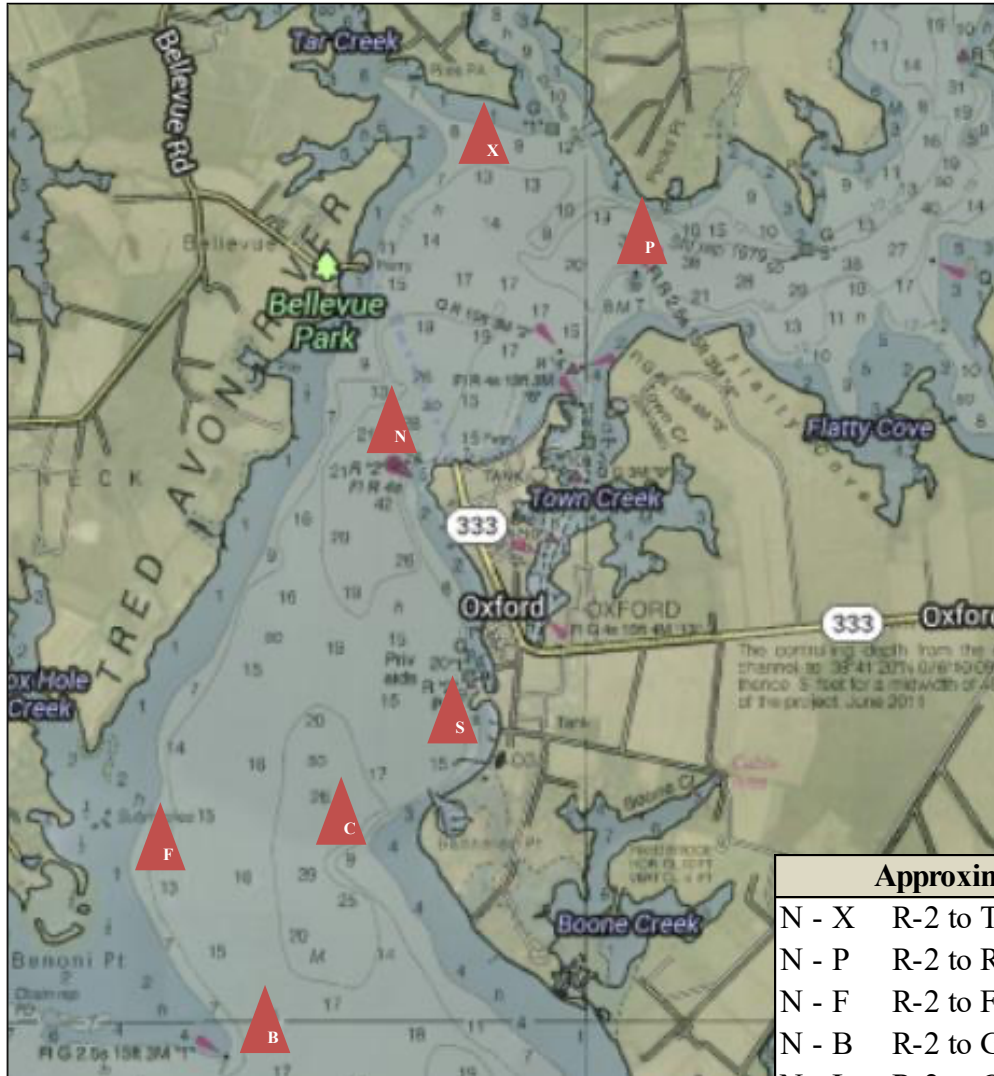
## **16. SAFETY REGULATIONS**

- 16.1. All canoes shall have a chase boat/tender with life jackets for all crew.
- 16.2. All canoes must have a life ring or throwable cushion with a rope attached. Any crew who cannot swim must wear a life jacket.
- 16.3. A boat that retires or leaves the racing area between races shall notify the race committee at the first reasonable opportunity by hail or on channel 18A.
- 16.4. It is the sole responsibility of the owner and/or skipper to ensure that these safety requirements are met.

## **17. PRIZES**

- 17.1. Trophies will be awarded as stated in the NOR.
- 17.2. Prizes will be awarded following racing on Sunday. Results will be posted at [www.tayc.com/racing-calendar](http://www.tayc.com/racing-calendar).





Approximate Distances		
N - X	R-2 to Tar Crk	0.85
N - P	R-2 to R-4	0.90
N - F	R-2 to Fox Hole	1.15
N - B	R-2 to G-1	1.77
N - L	R-2 to CR Light	2.27
N - C	R-2 to Bach Pt	1.24
N - S	R-2 to Pier St	0.80
F - C	Fox Hole to Bach Pt	0.59
F - L	Fox Hole to CR Light	1.56
F - B	Fox Hole to G-1	0.89
F - S	Fox Hole to Pier St	0.59
F - X	Fox Hole to Tar Crk	2.27
B - L	G-1 to CR Light	0.58
B - C	G-1 to Bach Pt	0.83
B - X	G-1 to Tar Crk	3.01
C - S	Bach Pt to Pier St	0.39
X - P	Tar Crk to R-4	0.52

**MARKS**  
Orange Club marks are 6' tall inflatable cylinders, a 4' "pin" may be substituted to establish an end of the starting or finishing line.

- A Club start / finish mark
- B Government mark "G1" near Benoni Point
- C Club mark near Bachelors Point
- F Club mark near Fox Hole Creek
- N Government mark "R2" off TAYC
- L Choptank River Light
- P Government mark "R4" near Peck's Point
- S Club mark near Pier Street
- X Club mark near Tar & Plaindealing Creeks

<https://www.boulter.com/gps/distance>